



## **AusSeabed Newsletter No. 14 May 2020**

Hello all,

Welcome to the May newsletter. I trust you're all looking forward to the easing of COVID-19 restrictions over the coming months ahead. Hopefully, there have also been some positive outcomes in finding new ways to live and work from home during these difficult times.

Quote for this month:

*"Every moment is a fresh beginning" T.S. Eliot*

Remember we welcome contributions so if you have something you'd like to share, please send it in!

### ***Update from the chair***

Dear AusSeabed community,

Hope you are all doing well. Nominations to renew five positions on the AusSeabed Steering Committee have now opened (see below). Consider joining us to provide strategic direction to the program.

The AusSeabed Outreach team put together an exciting webinar series "Bringing the seabed to you" starting on the 25 June (see *upcoming meetings*). With a mix of talks, workshop and general information sessions, we will cater for everyone. We look forward to seeing you in great numbers.

### ***Governance Updates***

#### ***Steering Committee Nominations Now Open!***

The AusSeabed Steering Committee oversees the strategic direction of the program. The committee consists of an equal and fair representation of the different sectors that make up the collaborator base of the program. Terms on the committee last two years and are staggered so that half of the committee refreshes each year to ensure continuity. The AusSeabed Steering Committee Terms of Reference and Election Standard of Procedures can be accessed [here](#).

Five positions are up for re-election this year and nominations have now opened for:

- One academic (previously James Cook University)
- Two State Government (previously Victoria and New South Wales)
- One industry (previously Guardian Geomatics)
- One Federal Government Position (previously Australian Antarctic Division)

Organisations that are interested in putting forward for general membership on the Committee must be able to commit the support required for their nominee to attend and participate in the annual Steering Committee meeting, complete duties that may arise from that meeting (such as engage with other partners from their sector, etc.), and attend the annual workshop and annual general meeting. Nominating organisations, if successful, are required to cover the costs associated with their representative attending and participating in these events.

Please note that current members are eligible to renominate for continued service.

**To apply, please email the following information to [AusSeabed@ga.gov.au](mailto:AusSeabed@ga.gov.au) by close of business (5pm) on 25<sup>th</sup> May:**

- The name of your organisation
- The number of AusSeabed meetings/workshops your organisation has attended
- The name of the representative from your organisation who would sit on the committee
- Whether your organisation has agreed to support your participation in the Steering Committee (flights to meetings, accommodation, etc.)
- 75 words or fewer on why your organisation should help lead AusSeabed on the Steering Committee.

**The timeline for the rest of the renewal process will be as follows:**

- Nominations close: Monday 25<sup>th</sup> May
- Immediate appointments & voting for contested positions open: Monday 1<sup>st</sup> June
- Voting closes: Monday 15<sup>th</sup> June
- Appointment: Monday 22<sup>nd</sup> June

If you have any questions, please email [AusSeabed@ga.gov.au](mailto:AusSeabed@ga.gov.au).

### ***Upgrade of the AusSeabed data portal***

We are launching the new and improved AusSeabed Marine Data Portal later this month, and as such, we will decommission [www.marine.ga.gov.au](http://www.marine.ga.gov.au).

The new AusSeabed Marine Data Portal will continue to provide access to publicly available seabed mapping datasets, and provide you with a better user experience. The new portal will perform better (faster, more reliable and stable), be simpler to use, and provide a suite of functionalities and analytical assessment tools to maximise the value of the data. These include elevation profile creation, marine sediments analytics, the ability to share maps with collaborators and add your own data or web data for viewing in the portal.

We would like to thank you for your support and look forward to continuing the journey with the AusSeabed Portal. Your feedbacks are important, so please provide them to [ausseabed@ga.gov.au](mailto:ausseabed@ga.gov.au)

### **Executive Board Meeting**

The AusSeabed Executive Board met on 28 April. Outcomes included:

1. Agreement to accelerate data accessibility through the AusSeabed portal to ensure continued support of the stakeholders and end-users.
2. Progression of a collaborative head agreement between the 5 member agencies to solidify commitment to the AusSeabed program.
3. Commissioning of an economic benefit analysis on the value of seabed mapping data to further support investment in the progress

## **Upcoming Meetings**

### **AusSeabed Webinar Series: Bringing the Seabed to you**

This year AusSeabed will be hosting a webinar series in place of our annual seabed mapping seminar, workshop and Annual General Meeting. These webinars will include lightning talks from speakers earmarked to present at this year's cancelled AMSA seabed mapping session alongside AusSeabed workshop activities.

Attendance is free, but registration is required due to a capped number of participants. Each session follows a different theme (outlined below) and programs will be finalised and distributed in the weeks leading up to each event, to allow for speaker scheduling. We would like to invite anyone with an interest in seabed data (personal or professional) to consider registering and becoming more involved with the AusSeabed community. Each seminar will be held on the last Thursday of the month from June to September and run from 1100–1245 AEST.

**June (25<sup>th</sup>):** National to International perspectives on seabed mapping (with AusSeabed data hub workshop activities)—[register here](#).

**July (30<sup>th</sup>):** Mapping for management in the Anthropocene (with Tools and standards workshop activities)—[register here](#).

**August (27<sup>th</sup>):** Data sharing and collaboration (with Outreach, Education and engagement workshop activities)—[register here](#).

**September (24<sup>th</sup>):** Cross sector talks on the applications of seabed mapping (with program strategy activities)—[register here](#).

If you have any questions, or would like more information please contact [ausseabed@ga.gov.au](mailto:ausseabed@ga.gov.au)

## First Session schedule: Thursday 25 June 2020

NZ	AEST	AWST		Thursday 25 June 2020 Workshop theme: Data hub Talks: national to international perspectives
1300	1100	0900	General Business	Kim Picard ( <u>AusSeabed</u> chair) (30 mins) Welcome The story so far through the Annual Report Workplan 2020/21 Discussion
	1105			
	1110			
	1115			
	1120			
	1125			
1330	1130	0930	Speed Talks and Question Time	Tony Worby (10 mins) <i>National Marine Science Plan Refresh &amp; sig. of mapping</i> AHO (10 mins) <i>Data and the HIPP</i> Kevin McKay NIWA (10 mins) <i>Seabed2030 update</i> Questions (5 mins)
	1135			
	1140			
	1145			
	1150			
	1155			
	1200			
1405	1205	1005	Themed Workshop Session	Kim Picard (45 mins) Theme Workshop Session <u>AusSeabed</u> Portal Exploring the portal Coordination Tool Data sharing Discussion Kim – questions and close
	1210			
	1215			
	1220			
	1225			
	1230			
1435 – 1445	1235 - 1245	1035 – 1045		

## Other News

### VISIONING THE CORAL SEA MARINE PARK - expedition FK200429

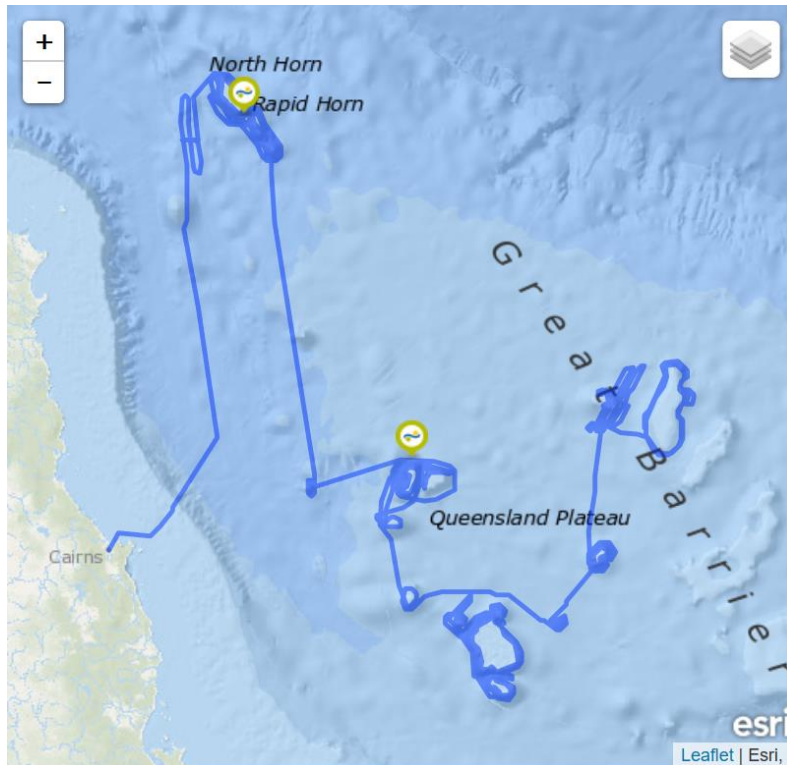
<https://schmidtocean.org/cruise/visioning-the-coral-sea-marine-park/>

“Within Australia’s largest marine reserve, the recently established [Coral Sea Marine Park](#), lies the Queensland Plateau, one of the world’s largest continental margin plateaus at nearly 300,000 square kilometers. The plateau contains 30 large coral atolls including the famed Osprey Reef, Lihou Reef, and Diamond Islets. Here a wide variety of reef systems range from large atolls and long banks to shallow coral pinnacles. Virtually unmapped and mostly unexplored beyond the shallower parts of these reefs, Dr. Robin Beaman, James Cook University, and a team of scientists from Geoscience Australia, The University of Sydney, and the Queensland Museum will work remotely with *RV Falkor* to conduct unprecedented mapping and exploration of the Queensland Plateau. The expedition will provide insight into the geological evolution and biodiversity of Australia’s marine frontier” ([schmidtocean.org](#)).

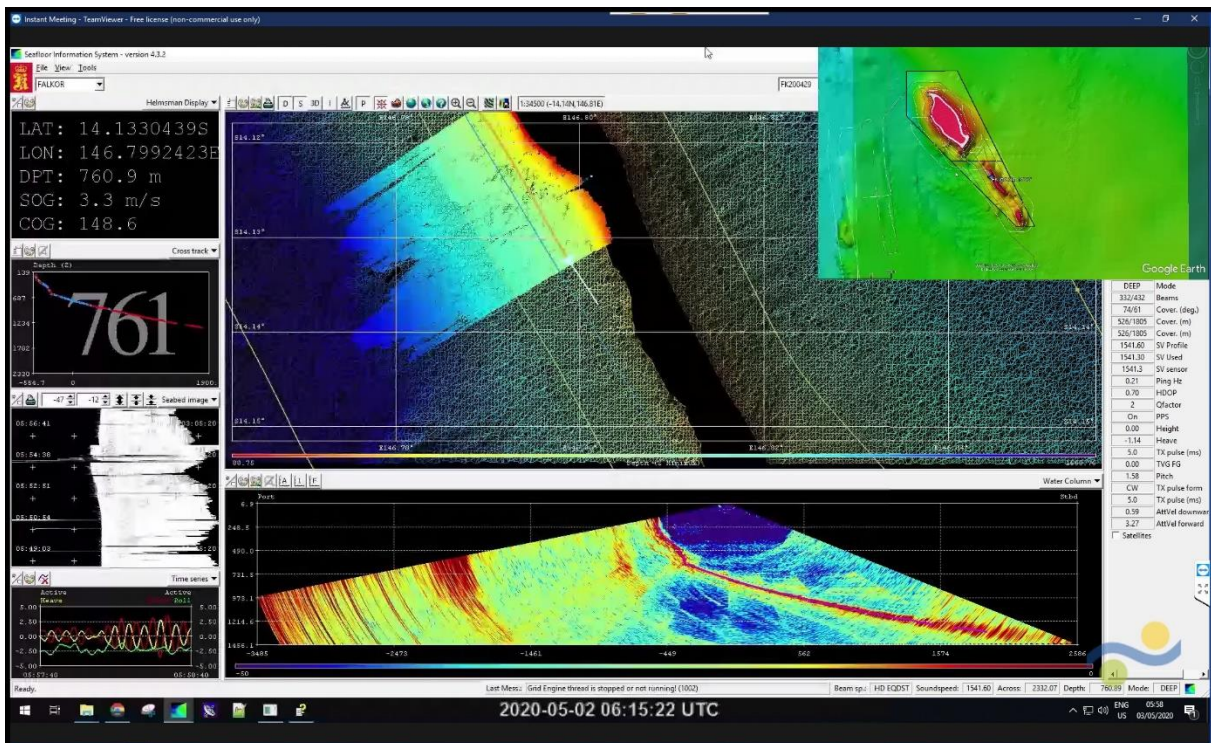
For more information, read Rob Beaman’s blog about the build-up to this survey here:

<https://schmidtocean.org/cruise-log-post/science-expeditions-covid19/>

Below is the proposed ship track for FK200429, the designation for this survey 29 April to 31 May.



Below is screenshot of TeamViewer screen that Rob Beaman has been running, which shows multibeam screen from Ops Room in real-time.



For those interested in the viewing some of the streamed live dives, hit the link below. You can view the SuBastion ROV series of dives narrated by Dr. Robert Beaman.

<https://www.youtube.com/user/SchmidtOceanVideos>

## **GEBCO SUB-COMMITTEE ON UNDERSEA FEATURE NAMES (SCUFN) - APPOINTMENT OF NEW MEMBERS**

In response to Reference A and B, the IHO Secretariat received seven nominations to fill the two vacant IHO positions on the GEBCO Sub-Committee on Undersea Feature Names (SCUFN).

References:

A. IHO CL 02/2020 dated 10 January – *GEBCO SCUFN, Vacancy for an IHO Representative.*

B. IHO CL 07/2020 dated 20 January – *GEBCO SCUFN, Additional Vacancy for an IHO Representative.*

C. SCUFN Terms of Reference and Rules of Procedures (SCUFN TORs and ROPs).

After a selection process, the agreement of the Chair of the SCUFN, unanimously agreed on the selection of the following candidates:

Prof Millard COFFIN (Australia)

Dr Marie-Françoise LEQUENTREC-LALANCETTE (France)

After consultation with the IOC Secretariat in accordance with Reference C (Article 2.1.1), the IHO Secretariat is pleased to report that no objection has been received with regard to the selections of Prof COFFIN and Dr LEQUENTREC-LALANCETTE.

## **OTHER ARTICLES**

### **DEACON UNIVERSITY AUSTRALIA**

Underwater video of fish assemblages using baited cameras, Great Ocean Road, Victoria, Australia

Underwater fish videos from Point Addis Marine National Park collected using BRUVS (Baited Underwater Video Station) as part of a research partnership between Parks Victoria and Deakin University along the Great Ocean Road to document fish diversity of spectacular temperate reefs.

<https://www.youtube.com/watch?v=Bf6W99Jiad0>

### **SCIENCE ARTICLE**

Ice monitor delivers a bonus: seafloor maps (Paul Voosen)

[https://science.sciencemag.org/content/368/6488/224?utm\\_campaign=toc\\_sci-mag\\_2020-04-16&et rid=34805409&et\\_cid=3288598](https://science.sciencemag.org/content/368/6488/224?utm_campaign=toc_sci-mag_2020-04-16&et rid=34805409&et_cid=3288598)

## AUSTRALASIAN HYDROGRAPHIC SOCIETY (AHS)

AHS news and media - <http://ahs.wildapricot.org/news>

Webinar #8 ([link](#)) - This well attended webinar was Cory Brooks (Unique Group) on remote control boat surveying under structures and the ixBlue ASV. This was followed by Emily Tidey (Hydrographic lecturer - Otago Uni) talking on surveying / geology on a NZ sub antarctic island.

## Share your work with the AusSeabed community

Finally, a reminder as always that anyone with an interest in AusSeabed can sign up to the newsletter mailing list on our website, where you can also check out past issues. And please send any items for the next letter to [AusSeabedNews@ga.gov.au](mailto:AusSeabedNews@ga.gov.au).