

AusSeabed Webinar Series

Bringing the seabed to you

Session Chair: Aero Leplastrier (AusSeabed Secretary, Geoscience Australia)

24th September, 2020

Housekeeping

*Please keep video off and microphone muted unless presenting!
Type questions in the chat and they will be collated by facilitators.
Your input is critical!*





We acknowledge the Traditional Owners of the land and sea country in Australia, The Aboriginal and Torres Strait Islander People.

We would like to pay our respects to Elders past and present and extend that respect to any Aboriginal and Torres Strait Islander people who are joining us today.



Agenda

1100 General Business– Aero Leplastrier (AusSeabed Secretary, Geoscience Australia)

Webinar Summary and AusSeabed Update

1110 Lightning Talks

Ocean Mapping, Exploration, and Characterisation: A National Imperative– Alan Leonardi (NOAA Office of Ocean Exploration and Research, USA)

Ship anchorages and benthic habitat – Allison Broad (University of Wollongong)

Submarine Cables and connecting Australia – Joanna El Khoury (GHD Brisbane)

Queen Charlotte Sound – Sally Watson (National Institute of Water and Atmosphere, NZ)

1155 Questions Break

1200 Lightning Talks

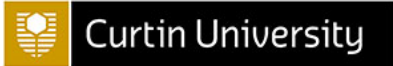
A new 30m bathymetry model for the Torres Strait – Rob Beaman (James Cook University)

Elizabeth, Middleton and the cyclone – Andrew Carroll (Geoscience Australia)

Applying attribute-based classification and typology to enrich intertidal and seabed mapping in Queensland – Maria Zann (Queensland Department of Environment and Science)

AusSeabed 10 year strategy, Other Business and wrap up – Kim Picard (AusSeabed Chair, Geoscience Australia)

1240 Questions and close – Aero Leplastrier



Australian Government
Geoscience Australia



Our Mission
Department of Transport
PHS Improve the coverage, availability, discoverability and accessibility of seabed mapping
Precision Hydrographic Services



Our Vision
By 2030, all available seabed mapping data with a marine estate will be readily and openly available, and new data acquisition will take into account the needs of a wide range of users

AUS

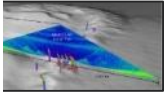
SEABED



NORTHERN TERRITORY GOVERNMENT



NIWA



SOS



GUARDIAN GEOMATICS



Government of South Australia

BES Water Column

Sub-Bottom

Sediment Samples

FRONTIER

iXblue

What's new since the last webinar?

The AusSeabed Publication Schedule is now live!



Join our Community

[Home](#)
[About](#)
[Data Portal](#)
[Survey Coordination Tool](#)
[Additional Resources](#)
[News & Events](#)

Bathymetry coverage

Publication Schedule



Latest News



Join our Community

[Home](#)
[About](#)
[Data Portal](#)
[Survey Coordination Tool](#)
[Additional Resources](#)
[News & Events](#)

Publication Schedule for GA and CSIRO bathymetry data - AusSeabed website

Estimated date of release	Entity to release	Dataset label	Collecting Entity	Survey year	Status
18 September 2020	GA	Beagle Marine Park V1	GA/UTAS	2018	Published
18 September 2020	GA	Submarine Cape Range Canyon V1	SOI	2020	Published
18 September 2020	GA	Visioning the Coral Sea V1	SOI	2020	Published
30 September 2020	GA	Elizabeth Middleton reefs V1	NESP	2020	New
18 September 2020	GA	Outer Darwin Harbour V0	GA/AIMS	2015	Published
9 October 2020	GA	Bynoe Harbour V1	GA/ANTS/NT	2016	New
15 September 2020	CSIRO	Boags Marine Park Survey V1	CSIRO	2018	Published
9 October 2020	GA	Davis Coast Survey 2017 V1	GA/AAD/AHO	2017	On Hold
18 September 2020	GA	Casey Station survey V0	GA/AAD	2014-15	Published
23 October 2020	GA	Casey Station survey V1	GA/AAD	2014-15	On Hold
18 September 2020	GA	Leveque Shelf Survey V0	GA	2013	Published
18 September 2020	GA	Petrel Sub-basin Survey V0	GA	2012	Published
18 September 2020	GA	Davis Coast Survey 2010 V0	GA/AAD	2010	Published
18 September 2020	GA	Darwin Harbour Survey V0	GA/IXsurvey	2011	Published
18 September 2020	GA	Darwin Harbour Survey V0	IXsurvey/DPC	2010	Published
18 September 2020	GA	Oceanic Shoals CMR Survey V0	GA/AIMS	2012	Published
18 September 2020	GA	Southeast Tasmania Survey V0	GA/UTAS	2009	Published
18 September 2020	GA	Carnarvon Shelf Survey V0	GA/AIMS	2008	Published
30 September 2020	GA	Bonaparte Gulf Surveys V0	GA/AIMS	2009-10	On Hold
18 September 2020	GA	Lord Howe Island Survey V0	GA	2008	Published
18 September 2020	GA	NSW Continental Slopes Survey V0	GA?	2006	Published

AusSeabed website

[Contact Us](#)
[Copyright](#)
[Privacy](#)

AusSeabed acknowledges the traditional owners of the country throughout Australia and their continuing connection to land, sea and community. We pay our respect to them and their cultures and to the elders past and present.



AUS
SEABED

Lightning Talks

Ocean Mapping, Exploration,
and Characterisation: A
National Imperative – **Alan
Leonardi**

Ship anchorages and benthic
habitat – **Allison Broad**



Lightning Talks

Submarine Cables and
connecting Australia – **Joanna
El Khoury**

Queen Charlotte Sound – **Sally
Watson**



**Questions then
quick 3 minute break!**



Lightning Talks

A new 30m bathymetry model
for the Torres Strait – **Rob
Beaman**

Elizabeth, Middleton and the
cyclone – **Andrew Carroll**



Lightning Talks

Applying attribute-based classification and typology to enrich intertidal and seabed mapping in Queensland –
Maria Zann

AusSeabed 10 year strategy, Other Business and wrap up –
Kim Picard

